

KOH 40-R High Power Fixture Guide

Indoor | Recessed | Output up to 2150lm

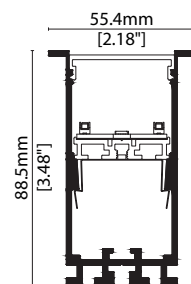


Key applications

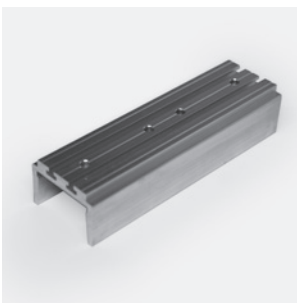
- ✓ Ceiling
- ✓ Office lighting
- ✓ Downlighting
- ✓ Wall grazing
- ✓ Interior

Key features

- ✓ Control Gear
- ✓ Extensive CCT range
- ✓ Custom lengths
- ✓ High lumen efficacy
- ✓ Decorative
- ✓ IP40
- ✓ Diffusion: Homogenous
- ✓ Lensed
- ✓ Direct view



MOUNTING METHODS



KKTJ-03 Joining bar



KKBK-19 Fixing bracket

KOH 40-R High Power

Specification sheet

KKDC



Dimensions	H88.5/W55.4/L584-1704mm (H3.48/W2.18/L22.99-67.09in)
PCB Cut-point	560/1120/1680mm (22.05/44.09/66.14in)
LED Pitch	-
Chip	h-line CREE/Lumileds
Cover/Optics	Louvre + (Frosted/10°/20°/30°/Spread Lens)
CCT	h-line : 2200K/2700K/3000K/3500K/4000K/5000K
LED binning	h-line : 3-step MacAdam Ellipse (4-step @5000K)
CRI	≥90 (2700K/3000K) ≥80 (2200K/3500/4000K) ≥75 (5000K)
Lifetime	50,000 hours @ 25°C (50,000 hours @ 77°F)
Operating temp	$T_a = -20$ to 45°C (T_c max = 62.9°C) $T_a = -4$ to 113°F (T_c max = 145.2°F)
IP Rating	IP40
Finish	Matt Silver/Grey/White/Black/Bronze Powder Coated
Mounting	Recessed mounting via bracket
Power feed	Male/female connectors
Control	0-10V/DALI (Integrated Power Supply)



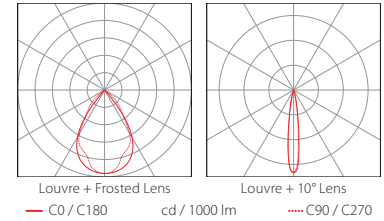
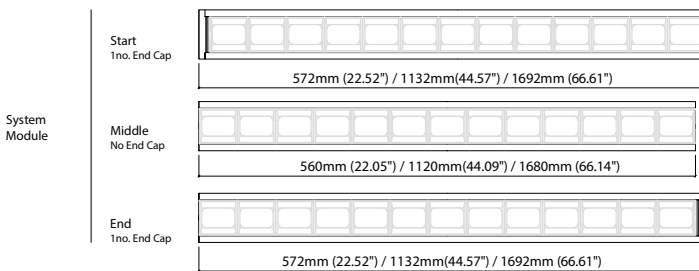
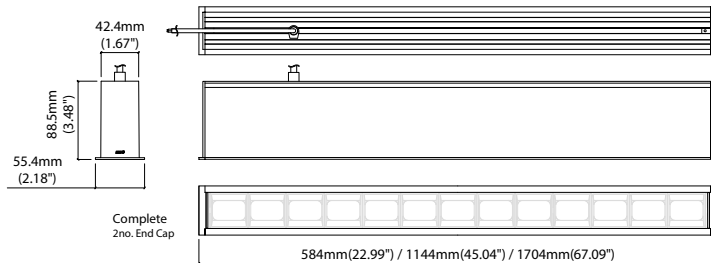
LED Grading Key

Exclusive Grade

h-line*	*KKDC tuned
Constant Voltage Lensed High Power LED	CCT range
3-step CCT range (4-step for 5000K)	

Power consumption	Supply voltage	Supply current	Power factor:
33.5W	240V AC 50Hz	0.14A	0.95 @ 239.99V, 50Hz

	Louvre + Frosted Lens	Louvre + 10° Lens	Louvre + 20° Lens	Louvre + 30° Lens	Louvre + Spread Lens	CRI	R9	Rf	Rg
h-line	870lm 27lm/W	2190lm 65.2lm/W	2150lm 64.1lm/W	1890lm 56.4lm/W	810lm 24.1lm/W	94	74	92	102



Data derived from independent UKAS/IESNA LM-79-08 accredited testing of production samples.

KOH 40-R High Power

Code Table



FIXTURE

Model	Finish		Cover	Grade	LED Type ¹	Colour (CCT)		Length Availability ²			Lens		Module Type*		Control Type		Input			
	GB																			
KOH 40-R	Matt White Paint	MW	Louvre (KOH)	T	h	High Power	957A	2200K ⁴	22	580mm	m	0580	Frosted lens	FL	Complete	FE	0-10V	4	AC 100V	b
	Matt Silver Paint	MS					2700K ⁴	27	1140mm	m	1140	10°	10	Start	LE	DALI	3	AC 220-240V	d	
	Matt Grey Paint	MG					3000K ⁴	30	1700mm	m	1700	20°	20	Middle	XE	No Controller	5	No PSU	i	
	Matt Black Paint	MB					3500K ⁴	35	22.05in	i	0022	30°	30	End	RE					
	Bronze Paint	BP					4000K ⁴	40	44.09in	i	0044	Spread lens	SL							
						5000K ⁴	50	66.14in	i	0066										

¹ Refer to **LED Grading Key** on **Specification sheet** page

² Refer to **Length Availability List** or enter total run length instead of length code

³ 2700K/3000K – 90CRI

⁴ 2200K/3500K/4000K – 80CRI

⁵ 5000K – 75CRI

* Module Type (various fixture lengths)

Complete	FE	
Start	LE	
Middle	XE	
End	RE	

Code Example:

GB	-	MW	-	T	-	h	-	957A	-	30	-	m	-	1140	-	30	-	FE	-	4	-	d
KOH 40-R		Matt White Paint		Louvre (KOH)		h		High Power		3000K		1140mm		30°		Complete		0-10V		AC 220-240V		

ACCESSORIES

Mounting Accessories

KKJT-03	Joining Bar
KKBK-19	Fixing bracket

* Refer to **Mounting accessories** on **Accessories** pages

Connection Accessories

KKCN-26	Power Feed Cable
KKCN-31	Power Feed Cable (Non-Fabric)

* Refer to **Power feed** on **Accessories** pages

PSU/Driver

0-10V/DALI (Integrated Power Supply)

LED ENGINE VARIANTS (LED STRIP TYPE)

Colour	LED	Lumen/module	Wattage	Spec Doc	Length
Single CCT	630A	1170/module	17.5	KOH 40-R High CRI	560/1120/1680mm (22.05/44.10/66.14in)
	957A	2190/module	33.5	KOH 40-R High Power	560/1120/1680mm (22.05/44.10/66.14in)

* Performance data: h-line, louvre + 10° lens, 3000K, 580mm module

KOH 40-R High Power Length Availability List

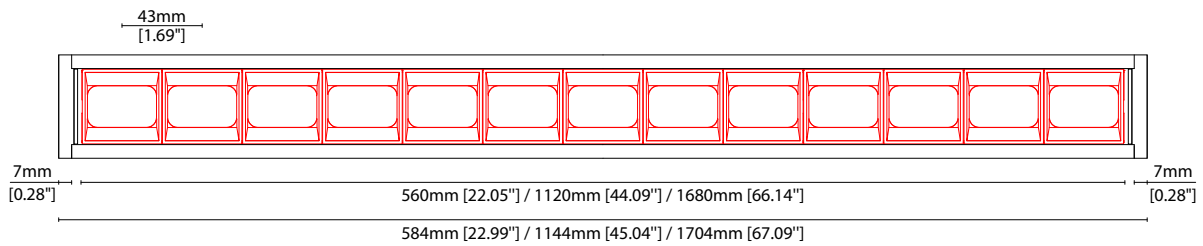


Length Code		Fixture Length ¹		LED Strip ²		End Cap Dimension ³		Wattage (W)	Output (lm)
Metric	Imperial(US)	Metric	Imperial(US)	Metric	Imperial(US)	Metric	Imperial(US)		3000K (Test Data)
m0584	i0023	584mm	22.99in	560mm	22.05in	14mm	0.55in	33.50	2184
m1144	i0045	1144mm	45.04in	1120mm	44.09in	14mm	0.55in	67.00	4368
m1704	i0067	1704mm	67.09in	1680mm	66.14in	14mm	0.55in	100.50	6553

¹ Actual total overall length of light fixture (LED strip + end caps + void/wire hole)

² Actual length of PCB strip

³ Actual length of 2x end caps



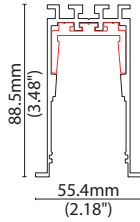
MOUNTING ACCESSORIES

Note: Accessories are to be ordered separately with corresponding code shown below.



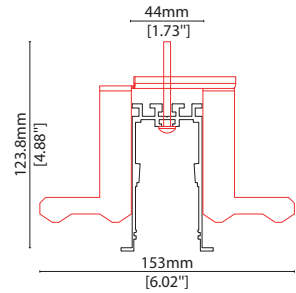
KKJT-03

Joining bar
(allow 1 per join)
L120/W38.3/H26.3mm
(L4.72/W1.50/H1.03")



KKBK-19

Fixing bracket
(allow 2 per metre/40in)
S/Steel finish
L50/W153/H118mm
(L1.97/W6.02/H4.65")



POWER CABLE



KKCN-26

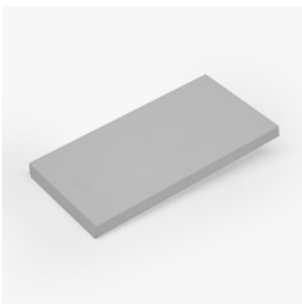
Power Feed Cable



KKCN-31

Power Feed Cable (Non-Fabric)

END CAPS AND LIGHT LEAK TAPE



- KKEC-S1 (2no.) - End cap pair (Mat white)
- KKEC-S2 (2no.) - End cap pair (Mat silver)
- KKEC-S3 (2no.) - End cap pair (Mat gray)
- KKEC-S4 (2no.) - End cap pair (Mat black)
- KKEC-S5 (2no.) - End cap pair (Bronze)



Black tape (prevents light leak)